

Southwest Fire Use Training Academy

2008-2009 Annual Report



EYES FORWARD

Southwest Fire Use Training Academy 2008-2009 Annual Report

2008 Advanced Academy 2008 Fall Session 2009 Advanced Academy

Guidance for Implementation of Federal Wildland Fire Management Policy: February 13, 2009

Use of Wildland Fire (from Glossary)

Management of either wildfire or prescribed fire to meet resource objectives specified in land and resource management plans.

Use of Wildland Fire

Wildland fire will be used to protect, maintain, and enhance resources and, as nearly as possible, be allowed to function in its natural ecological role. Use of fire will be based on land and resource management plans and associated fire management plans and will follow specific prescriptions contained in operational plans.

Use planned and unplanned ignitions to achieve land and resource management goals. Fire management is one tool in the restoration process and should be integrated with other land management activities (*from Table 1: Policy Clarification of Management Intent and Implementation Actions*).

FIRE USE TRAINING ACADEMY

**3265 East Universal Way
Tucson, Arizona 85706 USA
Phone: (520) 799-8787 FAX: (520) 799-8785
<http://www.nafri.gov/futa/>**





Mission

The Fire Use Training Academy develops fire use leadership skills through the integration of classroom and field facilitated learning opportunities.

Vision

The Fire Use Training Academy will be known for producing respected fire use leaders with exceptional abilities who share their knowledge and skills, continue to learn, and inspire others to perform with quality in mind.

Core Values

Learn: *Constantly*

Quality: *In all endeavors*

Respect: *Show it . . . Earn it*

Responsibility: *Seek it . . . Show it . . . Accept it*

Introduction

The Fire Use Training Academy (FUTA) is recognized as a center of excellence, uniquely blending formal training and valuable field experience to develop wise fire-use practitioners.

The academy uses existing facilities throughout the Nation to expose trainees to a variety of fuels management programs. During the traditional fall session, half of the students' 7-week session is spent completing formal National Wildfire Coordinating Group (NWCG) and Wildland Fire Leadership Development Program courses. The remainder of the students' time is spent in the field reinforcing and developing skills on various prescribed fire activities, including burning, writing plans, supporting management of long-term fires, and exposure to fuels treatments throughout the West. In the field, students have opportunities to perform various tasks as they work on completing initiated task books. During the Advanced Academy, students spend 3 weeks in the classroom completing NWCG 400-level courses and 1 week in the field completing a management project for a host unit.

With the Spring 2009 Advanced Academy, FUTA successfully graduated its twenty-second session. Following, by session, is a summary of events that occurred during 2008 and 2009. The annual report ends with a program summary of 1998 through 2009.



Tribute to Jerome Macdonald

Jerome Macdonald, USDA Forest Service, served as FUTA program manager since its creation in 1998. In May 2008, he retired as regional fire operations safety and training officer. He also served as geographic area training representative for the Southwest Geographic Area, coordinating interagency wildland fire training for Federal and state agencies throughout the Southwest.



Jerome Macdonald, FUTA program manager

Academy Staff

Lead Coordinator

Vacant

BIA Training Specialist

Vacant

Field Operations Specialist

As field operations specialist for the Fire Use Training Academy, **Travis Dotson** supervised field coordinators, coordinated prescribed fire projects with host units, coordinated courses and workshops offered during the sessions, and served as an instructor. Travis also served as coordinator for both the 2008 and 2009 Advanced Academies.



Travis Dotson

U.S. Forest Service Training Specialist

Vacant

Academy Assistance

John Fry handled much of the course coordination and management of FUTA's field project portion in 2008. He provided leadership and guidance to all field coordinators throughout the session. Coordination of actual field assignments is a crucial aspect of the academy, and John's outstanding management was key to the session's success. His detail to FUTA was the National Park Service's national in-kind contribution to the program. His 12-week detail represented a substantial commitment of agency funds and employee time.



John Fry



Maria Valerio

Maria Valerio detailed into the training specialist position from January through April 2009. Maria's duties included IQCS, training nominations, instructor recruitment, logistics, and assistance with course coordination. Maria served a crucial role and demonstrated a commitment to excellence and quality throughout her time at FUTA.

Duane Tewa, Bureau of Indian Affairs, served as FUTA's acting lead coordinator through 2008, along with supporting BIA's National and regional fire management and training programs. He also served on the Prescribed Fire Training Center's Steering Committee and on the National Leadership Committee for the Wildland Fire Leadership Development Program. In 2009, Duane accepted a position as assistant regional fire management officer for the BIA's Southwestern Region in Albuquerque.



Duane Tewa

Connie Stickel, Bureau of Land Management, detailed to FUTA February through April 2009. Connie was responsible for all logistics and daily operations at the academy. She managed all recordkeeping, materials creation, ordering, and equipment maintenance. Connie's detail to FUTA served as the BLM's New Mexico State Office in-kind contribution to the program.



Connie Stickel



Julian Affuso



Chris Wilcox

Julian Affuso and **Chris Wilcox**, Fish and Wildlife Service, represent two of the benefits offered FUTA in 2008 and 2009, as well as throughout the past decade by the Fish and Wildlife Service's New Mexico Fire District. Julian has served as lead field coordinator and course instructor, Chris as agency administrator representative and instructor. The fire district has provided additional support in the form of field coordinators, students, and instructors, as well as purchasing equipment and hosting field projects and field portions of classroom training.



Colleen Loretto



Evan Moore

Colleen Loretto, FAM office manager, and **Evan Moore**, office automation clerk, have provided consistent office management and logistical support for FUTA and Southwest Area training offered at the facility.

Mary Zabinski, Forest Service, is a regional public affairs office employee assigned to the FAM staff. She has dedicated public affairs support to FUTA behind the scenes since its inception, including assistance with annual reports, brochures, logistics, archives, and Web site management.

FUTA's Web site (www.nafri.gov/futa) describes the academy's program and session information, the application process for academy training and agencies' fuels projects, and prescribed fire safety. The site includes links to national wildland fire training, the Wildland Fire Leadership Development Program, the National Interagency Prescribed Fire Training Center, and Missoula and San Dimas Technology and Development Centers.



Mary Zabinski

Recent Highlights

- The Fall 2008 Session continued to facilitate collaboration with structural fire departments as evidenced by an individual from the Albuquerque Fire Department attending the entire session.
- The program continues to incorporate the Wildland Fire Leadership Development Program curriculum into the FUTA curriculum through workshops and the Upper Frijoles Staff Ride on Bandelier National Monument in New Mexico.
- FUTA staff worked with local resources to develop a wildland fire policy workshop and Wildland Fire Decision Support System workshop, delivered as part of the 2009 Advanced Academy.
- Management of the FUTA program has been shifted to the National Advanced Fire Resource Institute (NAFRI) in Tucson, Arizona.
- FUTA will operate out of Tucson, Arizona.
- FUTA will transition into a format consisting of a series of skill-specific sessions. Each session will last 2 to 4 weeks. This format will be operational in the fall of 2010 and session topics will include:
 - Prescribed Fire Planning and Implementation
 - Mechanical Fuels Treatment
 - Long-term Fire Planning and Management
 - Inventory and Monitoring



Leadership

FUTA continues to exhibit, develop, and promote leadership in multiple capacities and aspects. Students are the primary focus and they are instructed and exposed to leadership through classroom instruction and true operational field opportunities. FUTA has incorporated curriculum and teachings from the Wildland Fire Leadership Development Program.

Each traditional session has provided formal instruction on facilitating Sand Table Exercises and a number of students have returned to serve as instructors in following sessions. In this arena, FUTA has produced quality facilitators and a number of instructors who have taught in multiple situations and locations, produced written scenarios for the National library, and helped update the current curriculum.

Each traditional session has incorporated the Upper Frijoles Staff Ride. Again, FUTA has used former students and field coordinators to serve



Fall 2008 Field Coordinators (left to right): Doug Clark, Roy Fetzner, and Tyko Isaacson. Not pictured: Brandon Allen, Todd Campbell, Mike Krupski, Sara Savage, and Grady Wilson.

as group facilitators and to continue the cycle of leadership opportunities. FUTA's cadre has become the premier group of facilitators for this staff ride, and they continue presenting the ride to numerous outside groups and organizations.

FUTA has developed powerful, passionate

cadres for all of the classroom training it hosts. FUTA intentionally identifies students to be developed into instructors, coaches, and mentors. Often, field coordinators are used in this capacity as a way to expose them to multiple forms of leadership rather than field leadership only.

FUTA's field coordinator program has a long tradition of providing invaluable leadership development opportunities. Field coordinators are asked to take groups of individual leaders recently classroom-educated into the field and provide quality training to each individual and to the group as a whole. Field coordinators constantly remark on their personal growth as a leader after each session.

FUTA's staff and those who continually support the program are involved with leadership development in multiple aspects outside of the program, including participation on the National Wildland Fire Leadership Committee, fireline leadership curriculum revision and development, and staff ride development.

In 2007, FUTA staff instituted the FUTA Leadership Awards. Two awards are presented each session to FUTA participants—one, an award voted on by FUTA peers; the other, a recognition award from FUTA staff. The awards identify and recognize leadership qualities and capabilities exhibited during the session.

For the Fall 2008 Session, Renee Jack received the FUTA Leadership Award from her peers. The staff's FUTA Leadership Award was given to John Fry for his exemplary efforts throughout the session.



Renee Jack



John Fry

2008 Advanced Academy



*Back (left to right): Mario Gomez, Robyn Woods, John Lange, and Julian Affuso.
Front (left to right): Morgan Pence, Travis Dotson, and Steve Franke.*

FUTA program staff developed the Advanced Academy concept to replace the 7-week Spring Session (February-April). The 2008 advanced session was held January 27 through February 22 using NWCG 400-level coursework and a leadership management project.

The FUTA program proceeded to pilot this concept. They developed an application process and selected seven candidates based on their training and career needs. Six of the seven candidates were FUTA graduates and the Advanced Academy represented the next level of training and experience they needed in their careers. All candidates participated in trainings offered January 22-25 to better prepare for the Academy.

Response from graduates of the academy was clear; this academy definitely advanced their preparation for leadership in future programs. Target audience for the Advanced Academy includes current and aspiring decision support specialists, burn bosses, fire use managers, fire behavior and long-term fire analysts, and fire and fuels managers needing experience and training.

The students were tasked with two projects:

1. Produce a district prevention plan meeting all National requirements based on historical fire occurrence statistics.
2. Model and analyze a fire in a specified location utilizing historic weather data and make recommendations for appropriate management response based on findings.

In 3 days, students completed both tasks. Students presented findings to a panel consisting of a deputy forest supervisor, forest fire management officer (FMO), forest AFMO, district FMO, neighboring district FMO, two local fire department representatives, and a district prevention specialist.

The panel was pleased with the students' products and it was apparent the students solidified skills taught in the classroom. Interest was expressed in sending students from the forest to develop needed skills within the local staff, acknowledging that these skills are desperately needed at the National level to support the current direction of fire management.

Table 1 highlights the Advanced Academy's core curriculum, which included three NWCG courses. All told, 84 trainees completed a total 3,360 person hours of training.

During the Advanced Academy, four workshops were available to students (Table 2). In all, 57 students completed 456 person hours of training in these workshops.

2008 Advanced Academy Participants

Student, Agency/Unit, State

Julian Affuso, FS, Lincoln NF, Smokey Bear RD, New Mexico
 Travis Dotson, FS, Fire Use Training Academy, New Mexico
 Steve Franke, FS, Tahoe NF, Lake Tahoe BMU, Nevada
 Mario Gomez, FS, Klamath NF, Happy Camp-Oak Knolls RD, California
 Robyn Woods, FS, Eldorado NF, California
 John Lange, BIA, Ute Mountain Ute Agency, Colorado
 Morgan Pence, FS, Intermountain Regional Office, Idaho

Training Accomplishments 2008 Advanced Academy

Table 1. NWCG Core Curriculum

Course Title	Course Hours	FUTA Trainees	Other Trainees	Total Trainees	Total Trainee Hours
L-480	40	7	26	33	1,320
S-490	40	5	17	22	880
S-491	40	5	24	29	1,160
TOTAL	120	17	67	84	3,360

Table 2. Additional Workshops Attended

Workshop Title	Course Hours	FUTA Trainees	Other Trainees	Total Trainees	Total Trainee Hours
BEHAVE Plus	8	3	8	11	88
WIMS I	8	5	15	20	160
WIMS II	8	5	7	12	96
40 Fuel Models	8	5	9	14	112
TOTAL	32	18	49	57	456



Fall 2008



Top row (left to right): Travis Dotson, Chris Wilcox, Brian Austin, Renee Jack, Michael White, Jo Don Morton, Jon Miles, James Purswell, and T.J. Thrasher.

Second row (left to right): Travis Stanfill, Kevin Cahill, Chris Deets, Daniel Pearson, Alex Brooks, Tim Goforth, Robert Naranjo, Jeremiah Hansen, Tim Rainey, and John Fry.

Third row (left to right): Vince DeShazer, Tom Edwards, Dean Gashwarza, Martel Knipe, Shaniko Nichol-Driskill, Robert Washburn, Anthony Polk, Michael Haisten, William Knudsen, Jon Masters, and Seth Greene.

Front row (left to right): Roy Fetzer (FC), Sasha Ernst, Michael Wallace, Jeff Sanocki, Colton Herrera (did not complete), Jessica Sherwood, Ryan McPherson, Alan Debash, Una Kay Brown, and Drew Page. Not pictured: Duane Tewa.

During the Fall Session, students worked with multiple land management agencies on projects including prescribed fire operations and burn plan preparation. Students successfully treated 25,020 acres with prescribed fire. Table 3 lists the fuels management projects in which FUTA trainees participated during the Fall Session.

Table 4 highlights the Fall Academy's core curriculum, which included four NWCG courses. All told, 140 trainees completed a total 4,200 person hours of training.

An additional NWCG course was coordinated and offered outside the 7-week academy: *S-390, Introduction to Wildland Fire Behavior Calculations* (table 5). This course complements the fall curriculum and is an academy prerequisite. Twenty trainees completed 640 person hours of training in this course.

During the Fall Session, four workshops were available to students (table 6). In all, 134 students completed 1,288 person hours of training in these workshops.

Field Coordinators, Agency/Unit and State

Brandon Allen, FS, Kaibab NF, North Kaibab RD, Arizona
Todd Campbell, FS, Colville NF, Newport/Sullivan Lake RDs, Washington
Doug Clark, FS, Humboldt-Toiyabe NFs, Carson RD, Nevada
Roy Fetzer, FS, Wasatch-Cache NFs, Logan RD, Utah
Tyko Isaacson, FS, Payette NF, McCall Smokejumpers, Idaho
Mike Krupski, FS, Sawtooth NF, Twin Falls RD, Idaho
Sara Savage, FS, Olympic NF, Hood Canal RD, Washington
Grady Wilson, FS, Wasatch-Cache NFs, Ogden RD, Utah

Students, Agency/Unit and State

Brian Austin, FS, Payette NF, McCall Smokejumper Base, Idaho
Alex Brooks, FS, Lewis & Clark NF, SO, Montana
Una Kay Brown, FS, Cibola NF, Sandia RD, New Mexico
Kevin Cahill, BLM, Kanab FO, Utah
Alan Dabash, FS, Coconino NF, Peaks RD, Arizona
Chris Deets, FS, Ashley NF, Vernal RD, Utah
Vince DeShazer, FWS, Sevilleta NWR, New Mexico
Tom Edwards, FS, Medicine Bow-Routt NFs, Hahns Peak/Bears Ears RD, Colorado
Sasha Ernst, NPS, Cumberland Gap NHP, Kentucky
Dean Gashwazra, BIA, Hopi Agency, Arizona
Seth Greene, FS, Stanislaus NF, Calaveras RD, California
Tim Goforth, FS, Gila NF, Quemado RD, New Mexico
Michael Haisten, FS, Lake Meredith NRA, Texas
Jeremiah Hansen, Albuquerque Fire Department, New Mexico
Renee Jack, FS, Payette NF, McCall Smokejumper Base, Idaho
Martel Knipe, NPS, Mesa Verde NP, Colorado
William Knudsen, FS, Lewis & Clark NF, SO, Montana
John Masters, FS, Ocala NF, Lake George RD, Florida
Robert Naranjo, FS, Carson NF, El Rito RD, New Mexico
Shaniko Nichol-Driskill, FS, Payette NF, New Meadows RD, Idaho
Ryan McPherson, FS, Tonto NF, Cave Creek RD, Arizona
Jon Miles, FS, Kaibab NF, North Kaibab RD, Arizona
Joe Don Morton, BLM, Alaska Fire Service Smokejumpers, Alaska
Drew Page, NPS, Great Smoky Mountains NP, Tennessee
Daniel Pearson, NPS, Grand Canyon NP, Arizona
Anthony Polk, BIA, Fort Yuma Agency, Arizona
James Purswell, FS, Gila NF, Reserve RD, New Mexico
Timothy Rainey, FS, Apache-Sitgreaves NFs, Springerville, Arizona
Jeff Sanocki, FS, Kaibab NF, Williams RD, Arizona
Jessica Sherwood, NPS, Grand Canyon NP, Arizona
Travis Stanfill, BLM, Prineville District, Oregon
T. J. Thrasher, FS, Colville NF, Three Rivers RD, Washington
Michael Wallace, FS, Kaibab NF, Williams RD, Arizona
Robert Washburn, BLM, Ely District, Nevada
Michael White, NPS, Bandelier NM, New Mexico



Sand table exercise

Table 3. Southwest Fire Use Training Academy Project Participation, 2008 Fall Session

Project Name	Location	Agency	Date	Acres	Fire Behavior Fuel Model	FUTA Persons Assigned	Person Hours	Complexity
H/O Piles	Apache-Sitgreaves NFs, Black Mesa RD Heber, AZ	FS	10/7-11/08	83	Piles, 9	3	124.5	3
Tusayan South WUI	Coronado NF Tusayan RD Tusayan, AZ	FS	10/7/08 & 10/11-13/08	435	9	6	236	2
Nagel RX	Apache-Sitgreaves NFs, Black Mesa RD Heber, AZ	FS	10/7-12/08	162	2, 9	3	147	2
Elk-Lee	Kaibab NF Williams RD Williams, AZ	FS	10/7-8/08	210	9	6	132	2
Naegelin RX	Tonto NF Pleasant Valley RD Young, AZ	FS	10/14-17/08	525	1, 6, 9	4	144	2
Lofer RX	Fort Apache Agency White River, AZ	BIA	10/18-20/08	487	8, 9	3	132	3
A-1 RX	Coconino NF, Peaks/ Mormon Lake RD Flagstaff, AZ	FS	10/20-21/08	254	9	4	90	2
Nagel RX	Apache-Sitgreaves NFs, Black Mesa RD Heber, AZ	FS	10/21-23/08	162	2, 9	3	77	2
Woody Ridge RX	Coconino NF, Peaks/ Mormon Lake RD Flagstaff, AZ	FS	10/22-23/08	3	9	4	24	1
Agua Fria	El Malpais NM Grants, NM	NPS	10/23-24/08	1,100	1, 6, 9	3	85.5	2
Dogtown RX	Kaibab NF Williams RD Williams, AZ	FS	10/23-25/08	228	9	4	54	2
City RX	Kaibab NF Williams RD Williams, AZ	FS	10/23-25/08	313	9	4	54	1
South Rim Unit 5	Las Vegas NWR Las Vegas, NM	FWS	10/27-29/08	700	1, 3, 8, 11	3	108	2
Morefield RX	Mesa Verde NP Cortez, CO	NPS	10/27-29/08	109	1	4	126	2
Marteen WFU	Kaibab NF Williams RD Williams, AZ	FS	10/30- 11/3/08	10,000	2, 6, 9	8	264	2
Turkey Flat RX	Santa Clara Reservation/ Northern Pueblos Agency Española, NM	BIA/ Tribal	10/30/08	118	9	1	8.5	2

Project Name	Location	Agency	Date	Acres	Fire Behavior Fuel Model	FUTA Persons Assigned	Person Hours	Complexity
Ranch Supply RX	Cibola NF Magdalena RD Magdalena, NM	FS	10/30- 11/1/08	900	2, 6, 9	7	290.5	2
Blanco RX	Santa Fe NF Española RD Española, NM	FS	10/30- 11/2/08	1,232	9	7	254	1
Mineral blocks 1-4	Apache-Sitgreaves NFs, Springerville RD, Springerville, AZ	FS	10/30- 11/2/08	510	2, 9	8	284	2
Turpin	Shawnee NF Hidden Springs RD Vienna, IL	FS	11/2/08	100	3	7	91	2
Round Hill 3 RX	Buenos Aires NWR Sasabe, AZ	FWS	11/2-3/08	150	1, 6	7	182	2
Cement Hollow	Shawnee NF Hidden Springs RD Vienna, IL	FS	11/3/08	100	9	7	91	2
Johnson Co. Landfill	Shawnee NF Hidden Springs RD Vienna, IL	FS	11/4/08	54.6	3	7	77	2
Larsen	Apache-Sitgreaves NFs, Black Mesa RD Heber, AZ	FS	11/3-4/08	250	2, 9	8	164	2
Naegelin RX	Tonto NF Pleasant Valley RD Young, AZ	FS	11/5/08	1,628	1, 9	6	102	2
Apache Maid RX	Prescott NF Verde RD Camp Verde, AZ	FS	11/4-6/08	1,000	2, 6, 9	7	245	2
Volunteer Mtn. RX	Camp Navajo, AZ	DOD/ Flagstaff FD	11/4-6/08	90	2, 9	8	132	2
C-5	Truxton Cañon Agency Peach Springs, AZ	BIA	11/6-9/08	742	2, 6, 9	8	404	2
C-1	Aranas NWR Austewell, TX	FWS	11/7/08	650	3	6	168	2
Foothills RX	Guadalupe Mountains NP Salt Flat, TX	NPS	11/7-9/08	250	1, 6	7	247.5	2
Teasle	Crab Orchard NWR Marion, IL	FWS	11/7/08	10	13	7	84	3
Gila River BIA	Tohono O'odham Tribe/Gila River Agency Gila River, AZ	Tribal/BIA	11/8-11/08	50	6	8	240	2

Project Name	Location	Agency	Date	Acres	Fire Behavior Fuel Model	FUTA Persons Assigned	Person Hours	Complexity
Visitor Center	Crab Orchard NWR Marion, IL	FWS	11/8/08	20	13	7	84	3
Show Low South	Apache-Sitgreaves NFs, Lakeside RD ShowLow, AZ	FS	11/8-10/08	85	2, 4, 9, 11	7	245	2
Marina RX	Crab Orchard NWR Marion, IL	FWS	11/9/08	100	19	7	77	3
Pine Ridge III	Crab Orchard NWR Marion, IL	FWS	11/10/08	10	9	7	84	2
Truxton Agency Burn Plan	Truxton Cañon Agency Peach Springs, AZ	BIA	11/10/08	800	Piles	8	88	3
Lost Canyon	Kaibab NF North Kaibab RD Fredonia, AZ	FS	11/11/08	317	Piles	14	98	3
Tipover	Kaibab NF North Kaibab RD Fredonia, AZ	FS	11/12/08	77	Piles	12	132	3
Bean Mtn.	Prescott NF Bradshaw RD	FS	11/12-13/08	4	2, 9	8	264	2
Road Hollow	Kaibab NF North Kaibab RD Fredonia, AZ	FS	11/13-15/08	333	Piles	12	366	3
Martinez	Lincoln NF Sacramento RD Clouderoft, NM	FS	11/11-16/08	468	11, 6	7	462	2
Cherry Creek RX	Tonto NF Pleasant Valley RD Young, AZ	FS	11/14-15/08	200	2, 6	8	184	2
TOTALS				25,019.6		275	6,946.5	

Training Accomplishments Fall 2008 Session

Table 4. NWCG Core Curriculum

Course Title	Course Hours	FUTA Trainees	Other Trainees	Total Trainees	Total Trainee Hours
Rx-310, Introduction to Fire Effects	32	27	3	30	960
Rx-301, Prescribed Fire Implementation	24	34	1	35	840
Rx-341, Prescribed Fire Burn Plan Preparation	32	35	1	36	1,152
Rx-410, Smoke Management	32	34	5	39	1,248
TOTAL	120	130	10	140	4,200

Table 5. Additional NWCG Courses Sponsored

Course Title	Course Hours	FUTA Trainees	Other Trainees	Total Trainees	Total Trainee Hours
Rx-390, Introduction to Wildland Fire Behavior Calculations	32	8	12	20	640
TOTAL	32	8	12	20	640

Table 6. Additional Workshops Attended

Workshop Title	Course Hours	FUTA Trainees	Other Trainees	Total Trainees	Total Trainee Hours
Tactical Decision Games/Sand Table Exercise	12	30	6	36	432
BEHAVE Plus	8	32	0	32	256
40 Fuels	8	29	1	30	240
Upper Frijoles Staff Ride	10	35	1	36	360
TOTAL	38	126	8	134	1,288



Instructor Brad Washa and “Rx-310, Introduction to Fire Effects”



Table 7. Field Training Assignments

Position	Number
Firing Boss	21
Prescribed Fire Burn Boss Type 2	16
Fire Effects Monitor	19
Engine Boss	7
Task Force Leader	9
Helicopter Crew Member	1
Dozer Boss	1
Field Observer	1
Prescribed Fire Burn Boss Type 3	2
TOTAL	61

2009 Advanced Academy



The 2009 Advanced Academy incorporated lessons learned from the inaugural session to make adjustments and improvements. The 2009 advanced session was successful in providing high demand 400-level courses, appropriate workshops, and the opportunity to apply newfound skills to produce actual products for a host unit.

Response from graduates of the 2009 session confirmed the continued success by solidifying skills needed to serve as leaders in their respective programs.

Management Project Overview

The final project for the Advanced Academy consisted of two parts:

1. Produce a district prevention plan meeting all national requirements based on historical fire occurrence statistics.
2. Model and analyze fires in a specified location using historic weather data to aid in determining the range of options available for future management of natural ignitions.

In 3 days, students completed both tasks. They presented their findings to a panel consisting of a forest AFMO, district FMO, district AFMO, district fuels specialist, and district prevention specialist.

*Back (left to right):
Randy Garcia,
John Lyons,
Porfirio Chavarria,
and Chris Little.
Front (left to right):
Steve Clezie, Josh
Simmons, Travis
Dotson (FUTA
field operations
specialist), Emily
Irwin (regional
fuels specialist,
instructor), and
Maria Valerio (FUTA
training specialist).*



Prevention Plan

The prevention plan was compiled based primarily on data analyzed through the Fire Family Plus program and focused on quantification of fire danger thresholds in terms of energy release component (ERC).

Natural Ignition Simulation

Using Fire Family Plus, a correlation between historical weather data and historical fire data was done to determine the peak fire season and the timeframe allowing the most options for managing natural ignitions.

FSPro (Fire Probability Spread Model) was used to create fire simulations for two locations within the project area. Two simulations were created for each location to represent an ignition in varying conditions. The simulations were run for 14 days each.

2009 Advanced Academy Participants

Student, Agency/Unit, State

Randy Garcia, FS, Santa Fe NF, New Mexico
 John Lyons, BLM, Alaska Fire Service, Alaska
 Porfirio Chavarria, City of Santa Fe Fire Dept., New Mexico
 Chris Little, BIA, Mescalero Agency, New Mexico
 Steve Clezie, FS, Sawtooth NF, Idaho
 Josh Simmons, BIA, Pacific Region, California

Training Accomplishments 2009 Advanced Academy

Table 8 highlights the Advanced Academy’s core curriculum, which included two NWCG courses. All told, 27 trainees completed a total 1,080 person hours of training.

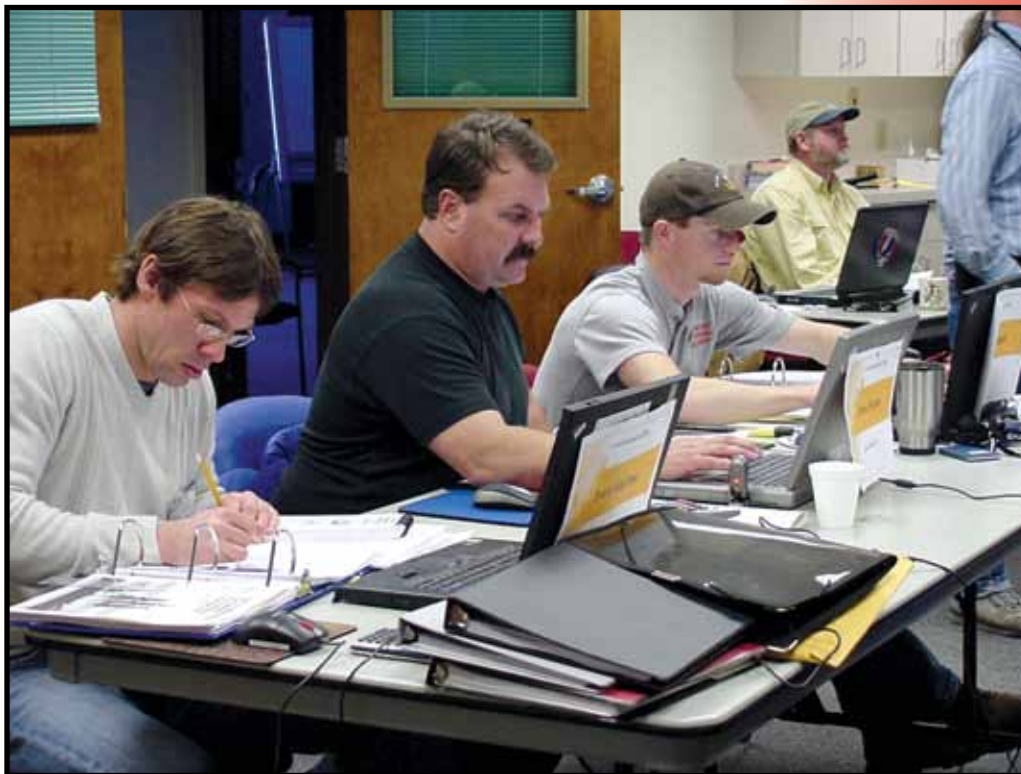
During the Fall Session, four workshops were available to students (table 9). In all, 29 students completed 232 person hours of training in these workshops.

Table 8. NWCG Core Curriculum

Course Title	Course Hours	FUTA Trainees	Other Trainees	Total Trainees	Total Trainee Hours
S-490	40	6	14	20	800
S-491	40	6	1	7	280
TOTAL	80	12	15	27	1,080

Table 9. Additional Workshops Attended

Workshop Title	Course Hours	FUTA Trainees	Other Trainees	Total Trainees	Total Trainee Hours
BEHAVE Plus	8	6	1	7	56
WIMS	8	6	2	8	64
40 Fuel Models	8	6	0	6	48
Fire Policy and WFDSS	8	6	2	8	64
TOTAL	32	36	5	29	232



S-490 course (left to right): Brent Wachter, Steve Franke, Travis Dotson, Dan Mindar and Tim Stubbs

Summary 2008-2009

From 2008 to 2009, there were 56 participants in the academy (figure 1), including students and field coordinators. Figure 2 shows each agency's participation in field projects.

Table 10 shows the total number of participants—field coordinators and students—attending the Academy in 2008-2009 by session and agency.

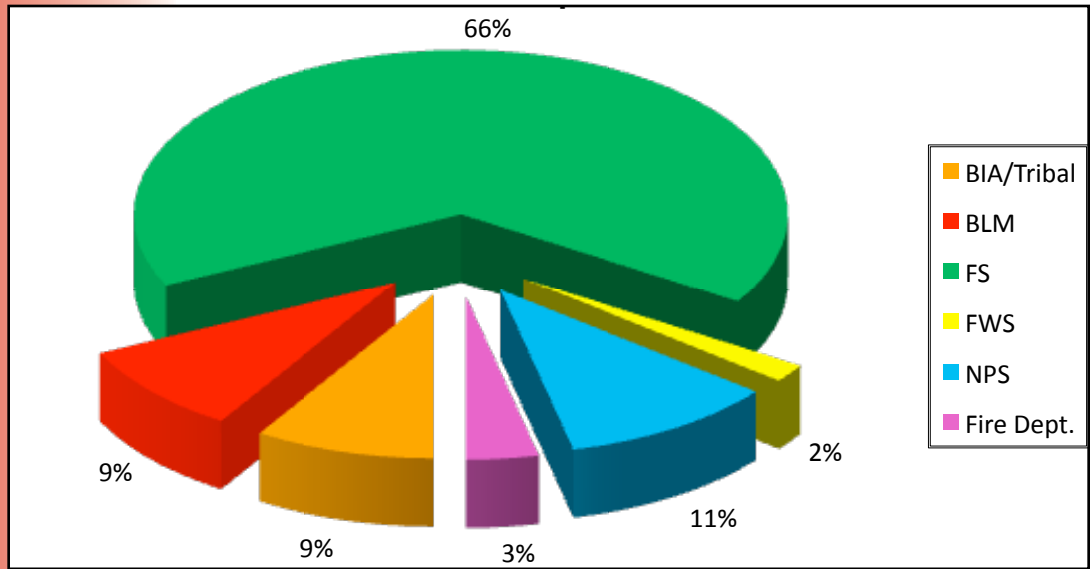


Figure 1. Agency Participation: 2008-2009 Participants

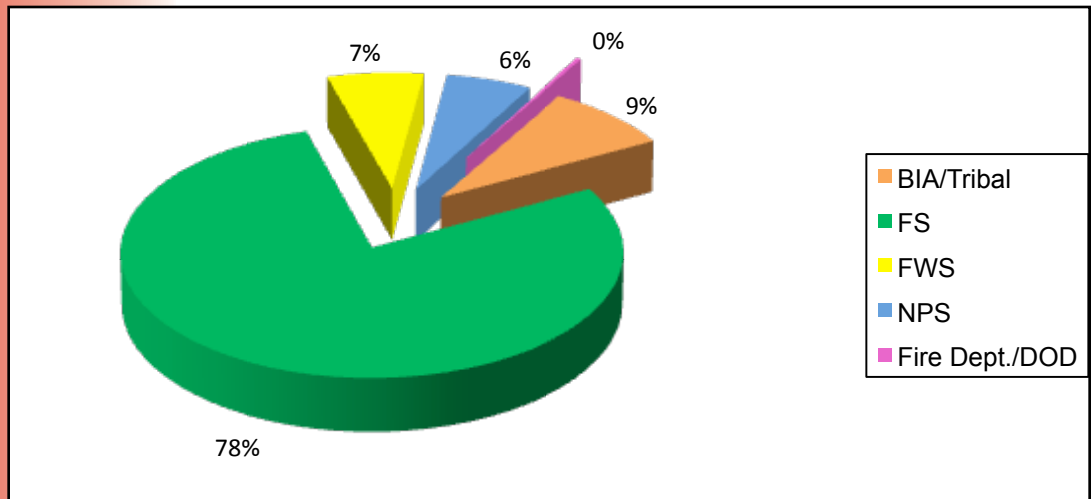


Figure 2. Agency Participation, 2008-2009 Project Acreage

Table 10. Academy Participants for 2008-2009 by Session and Agency

Session	Dates	Coordinators	Students	BIA/ Tribal	BLM	FS	FWS	NPS	Fire Dept.	Total Participants
Advanced Academy 2008	1/27/08 to 2/22/08	0	7	1	0	6	0	0	0	7
Fall 2008	10/3/08 to 11/20/08	8	35	2	4	29	1	6	1	43
Advanced Academy 2009	1/26/09 to 2/20/09	0	6	2	1	2	0	0	1	6
Total		8	48	5	5	37	1	6	2	56

Some 32 percent of the students participating in academy courses in 2008-2009 came from outside the FUTA program as shown in table 11 and figure 3. FUTA-sponsored courses are coordinated and led by FUTA staff and have a prescribed fire emphasis. Not all are held during the academy's formal sessions; some are scheduled throughout the training year. The following tables and charts show the split between FUTA and non-FUTA participants for NWCG core courses, other NWCG courses, and workshops.

Table 11. Trainees Completing 2008-2009 FUTA Sponsored Training

Type of Training	FUTA Trainees	Other Trainees	Total Trainees
NWCG Core Curriculum	159	92	251
Additional NWCG Courses	8	12	20
Workshops	180	62	242
TOTAL	347	166	513

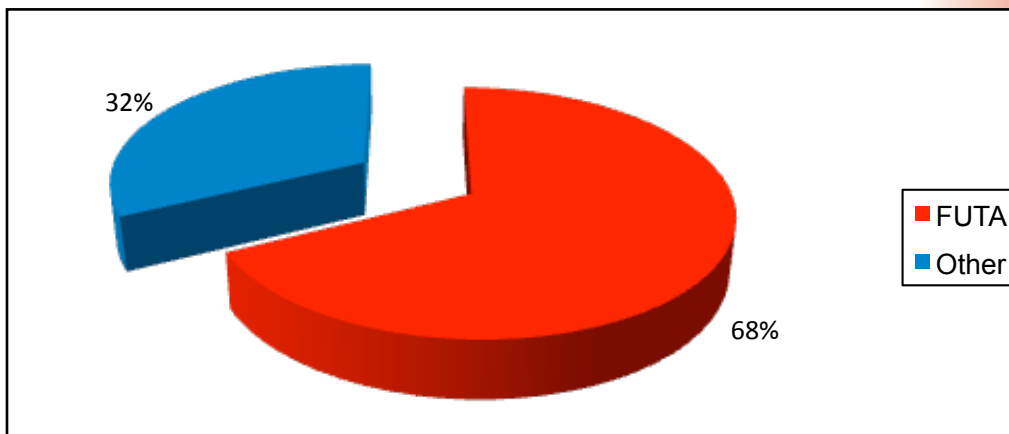


Figure 3. Trainees Completing FUTA-Sponsored Training

Table 12. NWCG Core Curriculum for 2008-2009

Course Title	Course Hours	FUTA Trainees	Other Trainees	Total Trainees	Total Trainee Hours
L-480, Incident Management Team Leadership	40	7	26	33	1,320
Rx-301, Prescribed Fire Implementation	24	34	1	35	840
Rx-310, Introduction to Fire Effects	32	27	3	30	960
Rx-341, Prescribed Fire Burn Plan Implementation	32	35	1	36	1,152
Rx-410, Smoke Management	32	34	5	39	1,248
S-490, Advanced Fire Behavior Calculations	40	11	31	42	1,680
S-491, National Fire Danger Rating System	40	11	25	36	1,440
TOTAL	240	159	92	251	8,640

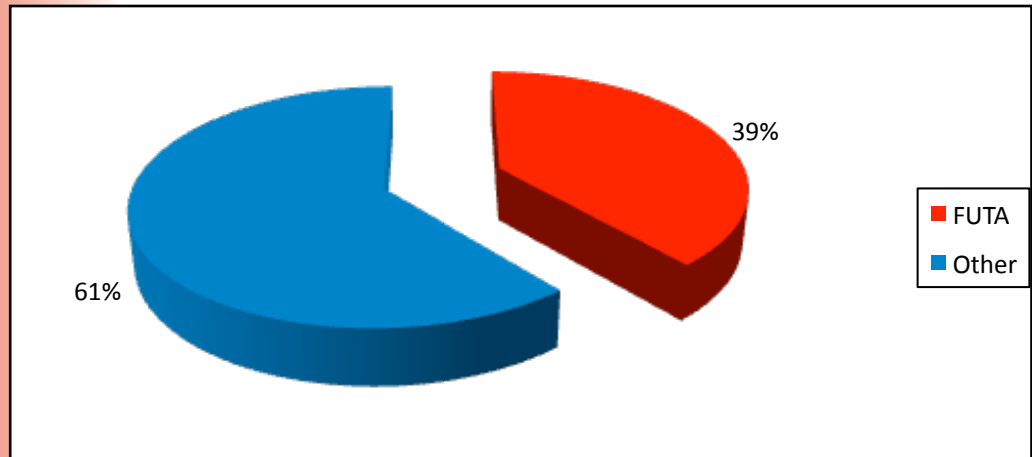


Figure 4. Trainees in NWCG Core Curriculum

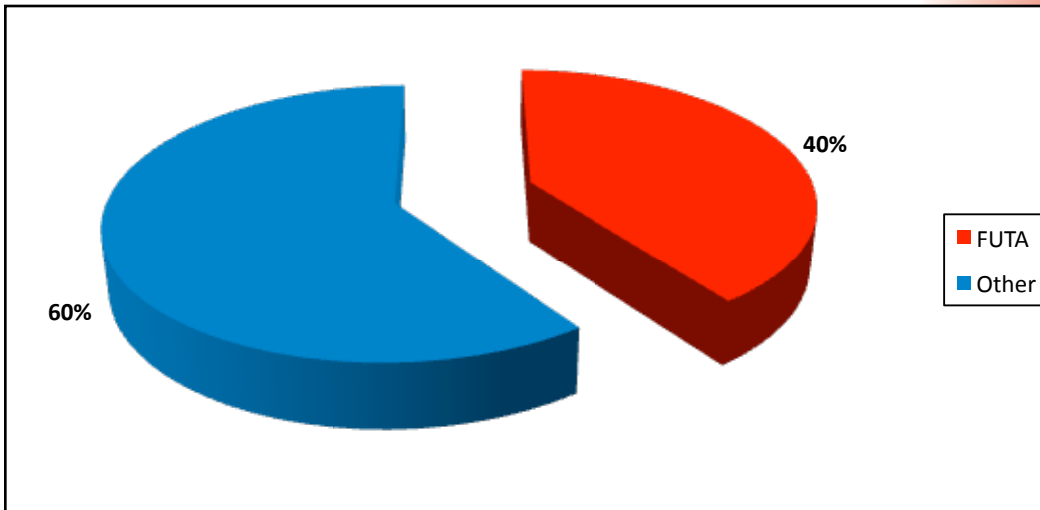


Figure 5. Trainees in Additional NWCG Curriculum

Table 13. Additional NWCG Courses Sponsored in 2008-2009

Course Title	Course Hours	FUTA Trainees	Other Trainees	Total Trainees	Total Trainee Hours
S-390, Introduction to Wildland Fire Behavior Calculations	32	8	12	20	640
TOTAL	32	8	12	20	640

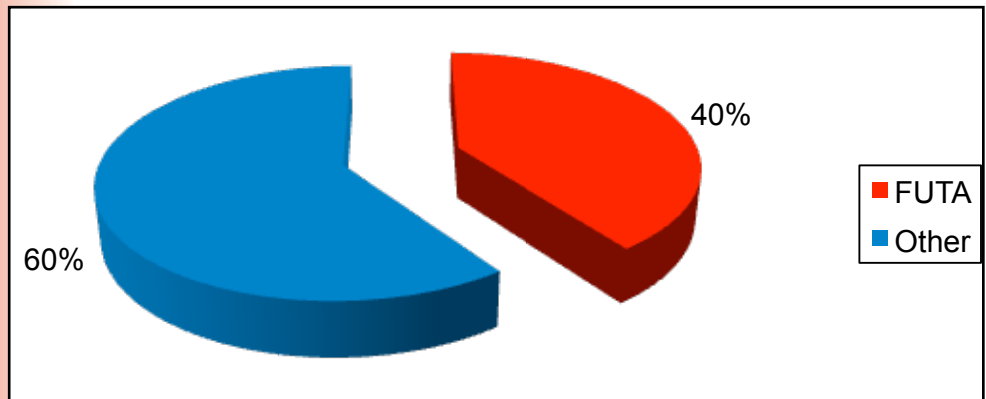


Figure 6. Trainees in FUTA-Sponsored Workshops

Table 14. Additional Workshops Sponsored in 2008-2009

Workshop Title	Course Hours	FUTA Trainees	Other Trainees	Total Trainees	Total Trainee Hours
BEHAVE Plus	8	41	9	50	400
Fire Policy and Wildland Fire Decision Support System (WFDSS)	8	6	2	8	64
40 Fuel Models	8	40	10	50	400
Tactical Decision Games/Sand Table Exercise	8	30	6	36	288
Upper Frijoles/Cerro Grande Staff Ride	12	35	1	36	432
Weather Information Management System (WIMS I)	8	11	17	28	224
Weather Information Management System (WIMS II)	8	5	7	12	96
TOTAL	60	168	52	220	1,904

Program Summary, 1998-2009

The academy is designed to develop leadership skills, experience, and diversity in future fuels program managers. Following is an executive summary of key academy accomplishments following its first 20 sessions, September 1998 through February 2009.

The Fire Use Training Academy successfully graduated its twenty-second class in 2009. As a National interagency program, FUTA combines both classroom training and field experience in fuels and fire management, integrating different agencies' fuel programs throughout the Southwest and other geographic areas.

Table 15 shows the number of FUTA graduates to date, listed by session. Table 16 shows the total number of FUTA graduates by session and agency. Figure 7 displays agency participation to date based on total number of graduates. Table 17 lists FUTA project accomplishments to date, shown by session. Table 18 lists academy training accomplishments to date, also listed by session.

Table 15. FUTA Graduates, Fall 1998 through Fall 2008

Session	Graduates
Fall 1998	24
Spring 1999	22
Fall 1999	36
Spring 2000	37
Fall 2000	35
Spring 2001	27
Fall 2001	45
Spring 2002	37
Fall 2002	39
Spring 2003	38
Fall 2003	49
Spring 2004	48
Fall 2004	51
Spring 2005	33
Fall 2005	42
Spring 2006	43
Fall 2006	44
Spring 2007	25
Fall 2007	33
Advanced Academy 2008	7
Fall 2008	43
Advanced Academy 2009	6
TOTAL	758



Table 16. FUTA Agency Participation, Fall 1998 through Fall 2008

Session	BIA/ Tribal	BLM	FS	FWS	NPS	State of NM	State of AK	Fire Departments
Fall 1998	9	2	12	0	0	0	0	0
Spring 1999	7	3	10	0	1	0	0	0
Fall 1999	7	7	26	0	2	0	0	0
Spring 2000	7	10	17	2	1	0	0	0
Fall 2000	6	12	13	1	3	0	0	0
Spring 2001	9	6	8	1	2	0	0	0
Fall 2001	8	11	24	0	2	0	0	0
Spring 2002	9	5	20	0	1	0	0	0
Fall 2002	10	9	20	0	1	0	0	0
Spring 2003	5	5	15	5	1	0	0	0
Fall 2003	7	11	11	0	3	0	0	0
Spring 2004	2	6	29	3	2	0	0	0
Fall 2004	6	9	32	0	2	1	1	0
Spring 2005	7	6	19	0	0	1	0	0
Fall 2005	6	3	29	0	4	0	0	0
Spring 2006	3	2	38	0	0	0	0	0
Fall 2006	4	0	38	1	1	0	0	0
Spring 2007	4	1	17	1	1	0	0	0
Fall 2007	4	1	21	1	1	0	0	1
Advanced Academy 2008	1	0	5	0	0	0	0	0
Fall 2008	2	4	29	1	6	0	0	1
Advanced Academy 2009	2	1	2	0	0	0	0	1
TOTAL	125	114	435	16	34	2	1	3

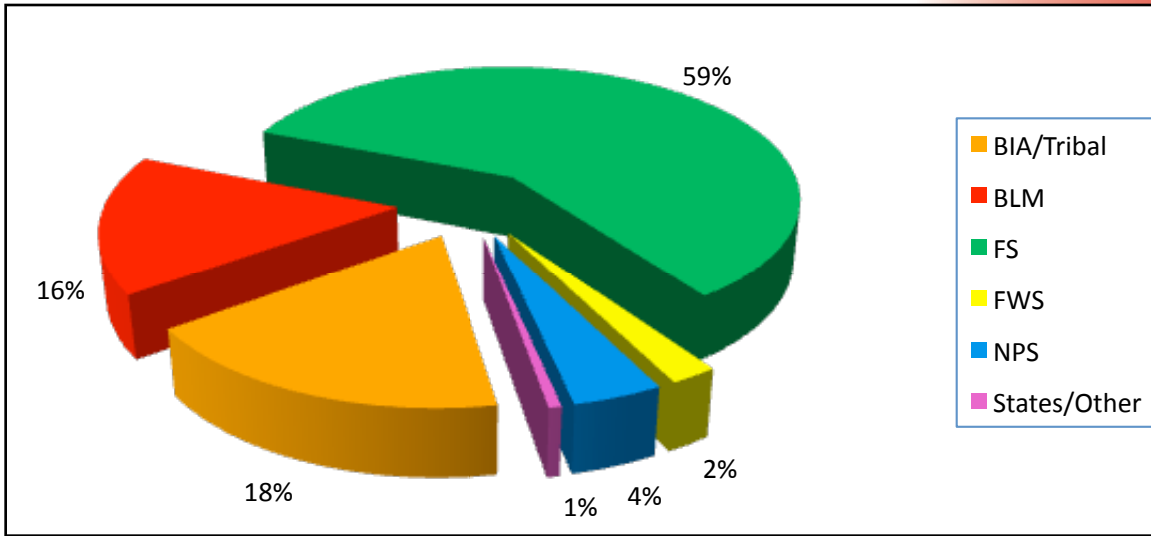


Figure 7. Agency Participation: 1998 through 2009

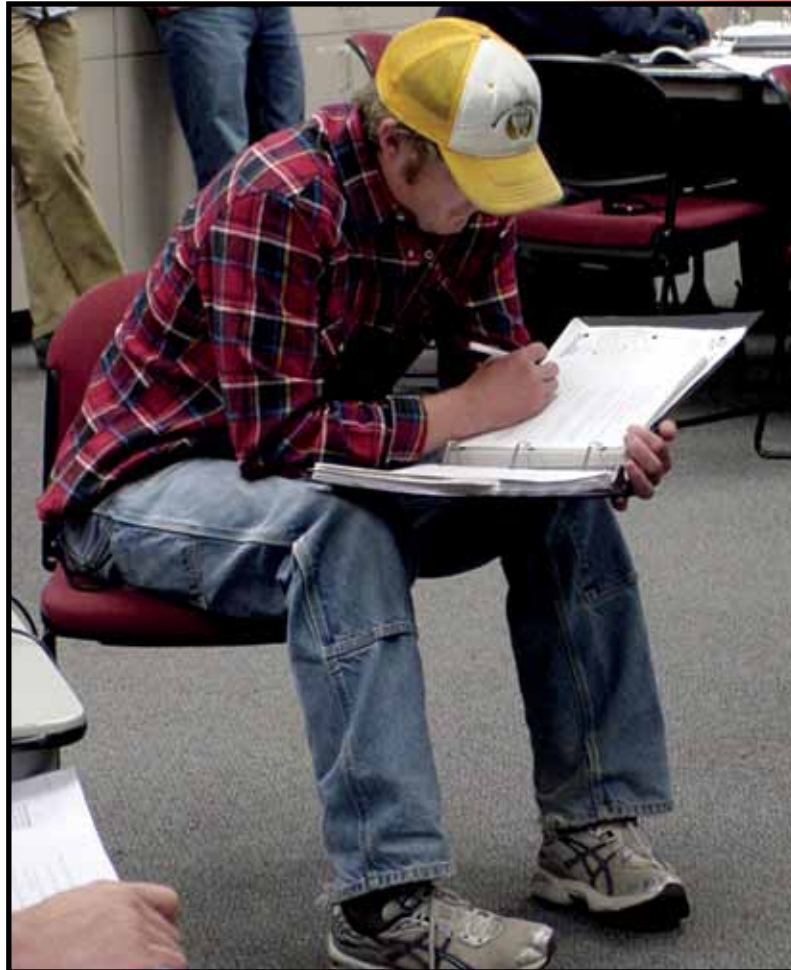




Table 17. FUTA Project Accomplishments, Fall 1998 through Fall 2008

Session	Acres	Projects	Personnel Assisting	Person Hours
Fall 1998	24,450	8	89	3,525.5
Spring 1999	8,960	9	118	5,282
Fall 1999	18,284	20	157	3,480
Spring 2000	31,710	18	157	5,399.5
Fall 2000	4,830	14	115	4,366
Spring 2001	5,148	13	106	4,872
Fall 2001	26,785	19	106	5,367
Spring 2002	21,571	21	159	5,753
Fall 2002	14,247	23	112	5,875.5
Spring 2003	122,854	34	203	10,720
Fall 2003	58,213	44	259	8,491
Spring 2004	31,162	29	193	6,833
Fall 2004	10,228	32	240	5,873
Spring 2005	22,458	25	152	3,167.5
Fall 2005	19,156	27	190	5,975
Spring 2006	11,663	21	120	2,685
Fall 2006	21,134	40	245	2,904
Spring 2007	18,333	36	190	2,764.5
Fall 2007	18,071	33	183	6,123.5
Advanced Academy 2008	—	—	—	—
Fall 2008	25,020	43	275	6,946.5
Advanced Academy 2009	—	—	—	—
TOTAL	514,277	509	3,369	108,403.5

Table 18. FUTA Training Accomplishments, Fall 1998 through Fall 2008

Session	FUTA Sponsored NWCG Course Hours	FUTA Sponsored NWCG Course Trainees	Workshop Hours	Workshop Trainees
Fall 1998/Spring 1999	296	300	146	806
Fall 1999	176	117	38	142
Spring 2000	208	200	38.5	212
Fall 2000	148	145	29	70
Spring 2001	208	224	—	—
Fall 2001	220	201	56	18
Spring 2002	204	191	48	151
Fall 2002	198	189	10.5	21
Spring 2003	170	177	81.5	197
Fall 2003	190	136	86	208
Spring 2004	176	164	41	105
Fall 2004	144	117	55	157
Spring 2005	242	205	18	57
Fall 2005	128	93	42	138
Spring 2006	176	164	48	169
Fall 2006	124	215	42	134
Spring 2007	192	142	56	110
Fall 2007	120	82	44	124
Advanced Academy 2008	120	84	32	57
Fall 2008	152	160	38	134
Advanced Academy 2009	80	27	32	29
TOTAL	3,552	3,249	949.5	2,982

For a full description of the Fire Use Training Academy, including applications for future academies and sessions, visit the FUTA Web site at:

www.nafri.gov/futa/

Fire Use Training Academy



The Future

The Fire Use Training Academy (FUTA) completed its 12th year of operation, graduating over 750 participants in 22 sessions. Training needs in fire management continually change and FUTA has a proud tradition of adapting to fit those needs. FUTA is reorganizing and beginning a major transition which will take the program to the next level and continue to serve the needs of the field with realistic fire and fuels career training.

Theory - Application

The program will continue to operate using the method of “theory – application” (classroom instruction immediately followed by related field experience). This method has always been the cornerstone of FUTA’s success. This balanced approach acknowledges the frustrations inherent to experience without instruction or instruction without experience. FUTA will continue to hold this value as it transitions into a new format. The adaptation is based on the need for practical training in specific skill sets in today’s fire service.

Skills-Focused Sessions

The program will consist of multiple skills-focused sessions varying in length from 2 to 5 weeks. Skill sets will be compartmentalized, allowing students to attend specific sessions to meet their current needs as well as allowing managers to plan subordinates’ career skills paths.

Focus sessions will include:

- Prescribed Fire Planning
- Prescribed Fire Implementation
- Mechanical Fuels Treatment
- Long-term Fire Planning and Management
- Inventory and Monitoring
- Landscape Fuels Management Planning

As appropriate, classroom portions will use existing NWCG courses. For example, the prescribed fire planning session will include RX-301 and RX-341. The majority of the remaining focus areas lack existing NWCG coursework and the curriculum will need to be developed using current practitioners and subject matter experts.

- Each session will follow the original concept of classroom instruction immediately followed by actual implementation/project completion appropriate to the session focus.
- The implementation portion will consist of time spent at a host unit completing an actual project needed by that unit relating to the curriculum. Examples include: writing a prescribed fire plan, a mechanical treatment plan/contract, or strategic operational planning for managing long-term fires.

- It is possible to have the entire session held at or near the project host location. Program staff can coordinate with regional fuels specialists and geographic area training representatives to identify locations in need of this type of work and capable of hosting the classroom portion. The sessions can rotate to geographic areas with a need for the training as well a host unit in need of the project to be completed.
- The target audience includes current and aspiring prescribed fire and fuels specialists or any other individuals desiring these skills.
- FUTA maintains responsibility for providing opportunities for students to gain prescribed fire application experience in multiple fuel types and terrain. This will be accomplished by hosting a prescribed fire implementation session consisting primarily of field time for students.



EYES FORWARD

